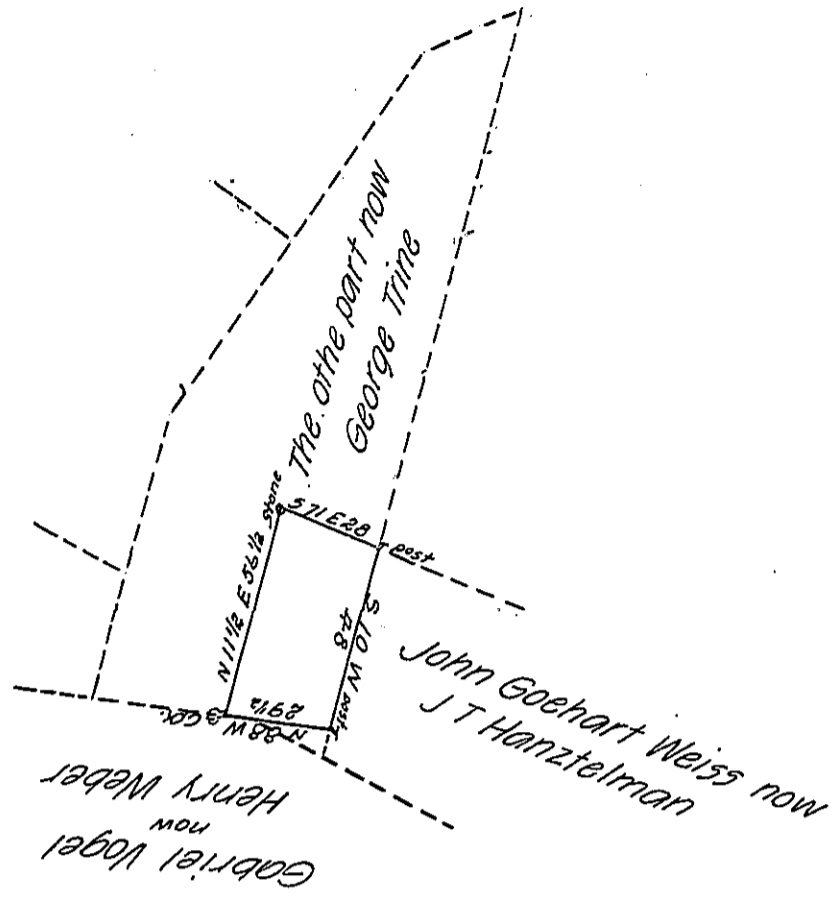


FORM No. 1.



A draught of a tract of land situate in Lynn Township in the County of Lehigh containing eight acres one hundred seventeen perches & allowance of 6 P cent &c Being part of 54 1/2 ac & allo^{ts} originally surveyed to Michael Mosser by warrant dated the 8th day of June 1754 the above part resurveyed for John Teter Hantzelman the 22th day of Nov^r 1820

Jacob Spangler Es 56

Geo S Eisenhart - -

IN TESTIMONY that the above is a copy of the original remaining on file in the Department of Internal Affairs of Pennsylvania, made conformably to an Act of Assembly approved the 16th day of February, 1833, I have hereunto set my Hand and caused the Seal of said Department to be affixed at Harrisburg, this ninth day of February 1906

Geo A R Brown
 Secretary of Internal Affairs.